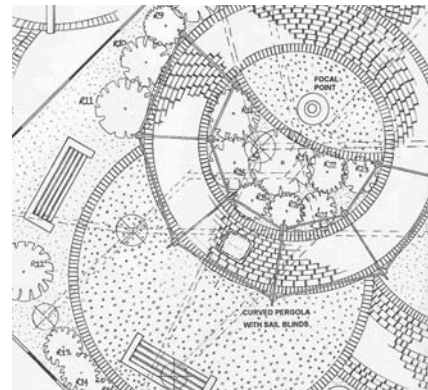


Petersfield Community Hospital, Hampshire, UK

League of Friends, completed Spring 2003

The League of Friends of this busy community hospital was bequeathed a sum of money towards the development of the two internal courtyard garden areas. The two spaces had been laid to lawn and were unattractive and uninspiring. A long corridor bisected the space and many hospital visitors were presented with an impression of neglect as they looked out of the windows in the corridor.



^ *Before the courtyards were developed, same views as other*

The design challenge was to create year-round interest in the two spaces and attempt to link them sympathetically with the hospital. Irregular shaped spaces offered an opportunity to use a simple, bold treatment that would bring a sense of place to the two outdoor rooms.

^ *A section of the design for the right hand garden showing the intersecting circles and curved pergola*



I chose a design based on circles as this shape, more than any other, helps to restore balance to the irregular site. Circles also draw attention to their centres which helps to create privacy in a heavily-overlooked space.

Ultimately, my aim was to provide enchanting spaces that would draw staff, patients and visitors into the contrasting experience of nature and the outdoors in the very centre of the hospital environment.

Brick paviors created circular paved areas and resin bonded gravel provided paths with a safe, non-slip surface. The left hand garden contains a central copse made up of two evergreen and two deciduous trees. Each flowers in a different season effectively creating a calendar through the changing appearances of the trees.



^ *'The Family' sculpture in the right hand garden.*

< *The curved pergola with colourful sails fixed between the frames is a key feature in the right hand garden during*

*Mark Rendell, garden designer, 29 Liverpool Street, Southampton, Hampshire, UK SO14 6FZ
t: 023 8023 3768 m: 07780 920 653 e: mark@thegrowingcompany.co.uk*