

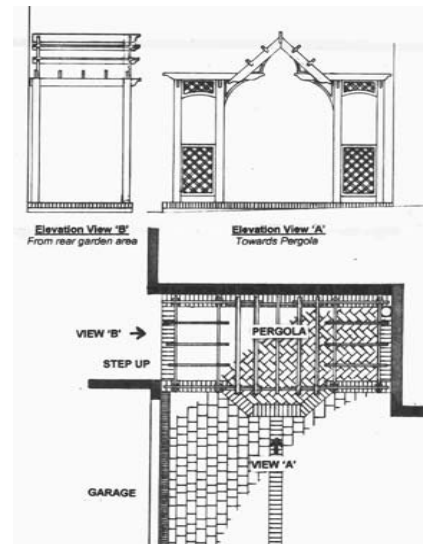
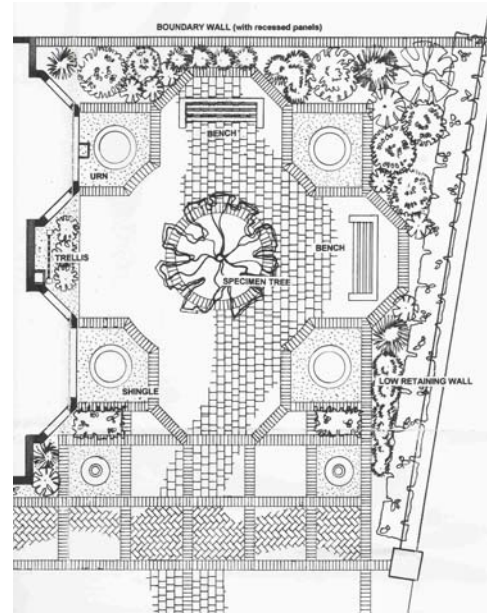
## Hythe, Southampton, Hampshire, UK completed April 2004



This mid Victorian double fronted house is set considerably lower than the street level. A drive slopes steeply down the southern side of the property towards the garage.

The design challenge was to disguise a vehicle turning area within the front garden area. The clients are keen gardeners and didn't want a typical block paved drive but something much more artful, practical and which would provide horticultural interest throughout the year.

I took my design cue from the shape of the double bay windows and the octagonal shapes that they suggested. I then developed a formal design which created strong symmetry in the front garden based on a circle and cross formation.



> The custom-made pergola structure at the side of the house is based on the architectural style of the house porch and garage eaves



I chose a pattern of bright red / orange bricks to complement those used in the house walls with a simple grey drivesett pattern. To overcome the difficulties of the steep slope and several changes in surface height and contour across the site, a grid pattern of brick soldier courses was laid to the correct datum heights across the sites and then filled in with pavers. A cherry tree (*Prunus 'Shirotae'*) acts as the principal focal point for the front garden.

