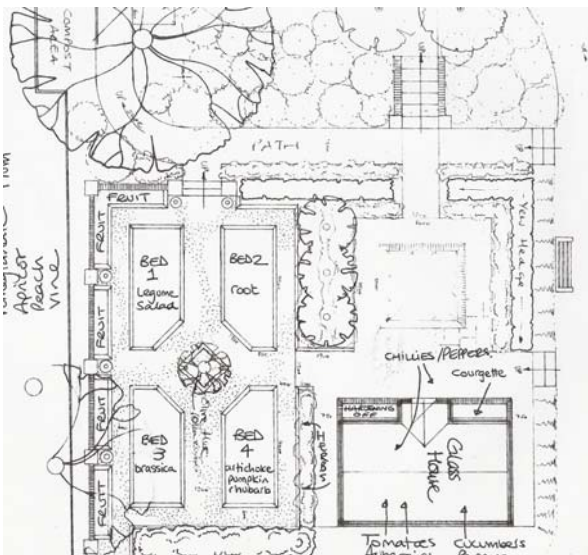


Central Hampshire, UK Kitchen Garden completed Spring 2006

This old dairy farm house, dating from the 1920s, was built in a simplified Arts and Crafts style and sits centrally in a square plot of about an acre with uninterrupted views of the valley behind.

A new glasshouse had been erected on the lower boundary and the client had plans to remodel the house. He wanted a design that would join up all parts of the garden with the house in a practical and pleasing way, and without feeling contrived or overly sophisticated.

I decided to develop the garden around the glasshouse first (as it was already a fixture in the garden) in order to give it a sense of purpose and connection to the glasshouse. I opted for a kitchen garden with four beds and an L-shaped protective wall.



This is a sunny, south-facing spot and the wall would give the added advantage of screening neighbours' gardens beyond. The client's old Olive tree (*Olea europaea*) now takes centre stage in the centre of the kitchen garden and espalier-trained apples grace the walls.



In front of the glasshouse, a dining area has been laid out allowing views into the kitchen garden through three early-flowering Red Buckeye trees (*Aesculus parvifolia*). A Yew hedge (*Taxus baccata*) encloses this space and continues the line of the new wall, in hedge form. The whole effect is a semi-enclosed space that links the act of gardening and cultivation to dining and entertaining.



From the dining area, a set of steps leads up the garden through a tunnel of Mulberry trees (*Morus nigra*) and towards the house. This is a strong alignment and bisects the garden into two areas – the 'Cook's Garden' linking with an outbuilding and the main garden with a sweeping lawn and large borders.



The raised beds are made from French oak and are 1200mm x 2400mm. A diamond shaped raised bed forms the focal point of this garden and acts as a perching seat.

