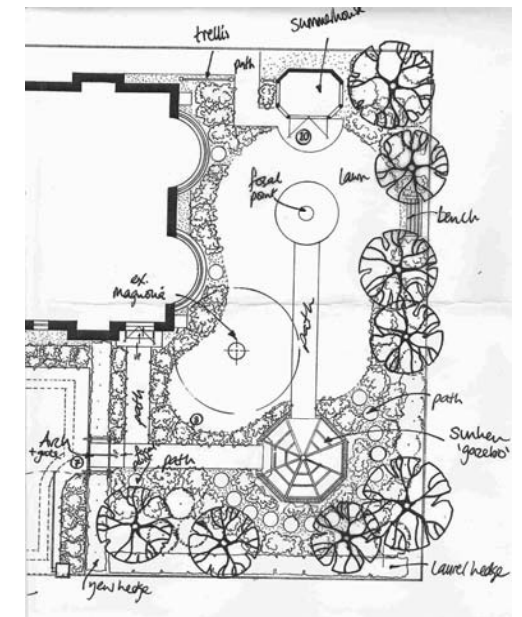


## Southampton, Hampshire, UK completed Summer 2007

This early Edwardian detached property enjoys a prominent position in a corner plot in a quiet cul-de-sac in Southampton. My remit was to improve the frontage of the property and give the two large garden areas a strong and distinctive design. My clients also wanted to reclaim a degree of privacy from the street. Taking my cue from the architectural details on the property, I developed a strongly angular approach in the upper garden and a softer, more classical approach in the lower garden.



<Before then after pictures taken from same position



Orienting paths and focal points within the space prevented attention from leaking out too much to the surrounding street. The strongly sloping site was altered a little in the lower garden by creating a 'sunken' octagonal gazebo area. In reality, the gazebo was built on the existing surface level and new topsoil pulled around the retaining wall.

A yew hedge divides the lower garden from the drive way, which is laid in period effect paviers. In the upper garden, I reduced the width of the deck area and introduced a water feature focal point. An island bed with bench helps to settle the view within the garden and will subtly screen overlooking windows in time. Deep and generously planted beds also help to increase a sense of privacy and intimacy. Cool, pastel shades of lilac, pink, blue, silver and white define the mood of the lower garden, whilst fiery reds, oranges, yellows, purples and bronzes lift the energy of the upper garden.