

Brockenhurst, Hampshire, UK

completed October 2006

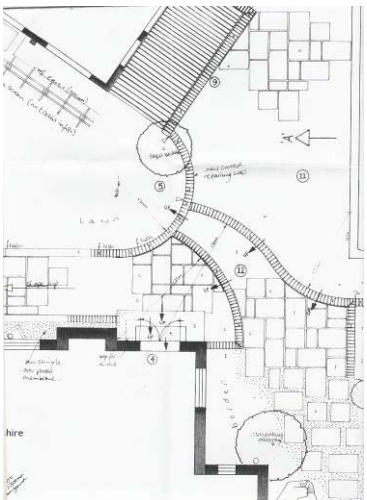
A new set of French windows knocked out of kilter the relationship between the garden and the kitchen in this large New Forest property. My task was to make the new journey into the garden from the house smooth, effortless and, above all, practical.



I liked the odd angle of the chalet overlooking the lower pool area and wanted this jaunty, out-of-synch position to be accentuated but harmonised in the finished plan. I also wanted to create some rhythm in the space – particularly as there was a significant change in levels across the garden. What I also wanted to change was the sense that the garden ‘poured’ into the pool surround area.



The design breakthrough came when I created a rounded projection to take in the Yew ball (a non-negotiable element of the new garden). This new shape ‘held back’ the upper garden but also swelled into the lower patio area. This convex shape also leads the eye neatly from the chalet, out and then around and up the side of the house, following the path edge to the top corner of the building.



The convex retaining wall also allowed me to create long, sinuous steps that butted onto this curve but which began from different levels of the lower garden.



In the final design, a series of terraces has been created: allowing a gentle descent to the pool surround area. And the chalet nudges its way confidently into the overall scheme!

