

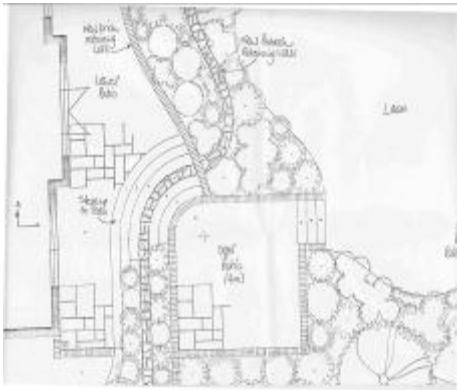
## Winchester, Hampshire, UK

*completed April 2005*

This house had a brick retaining wall 1.2m (4') high immediately outside the rear of the property. This interrupted the view of the garden from the French windows and made the rear rooms (north west facing) much gloomier than they needed to be.

The design challenge was to attempt to 'push' the garden a little further away but without simply replacing the old retaining wall with a new one. The garden rose to 1.5m (lawn level) high within a short distance.

I chose to curve the retaining wall away from the house near the French windows and loop it back towards a patio landing area off to the right (see Plan below). The patio was reached by a series of shallow circular steps that receded away from view.



A dry stone wall of reclaimed Purbeck stone counterpoints the brick walls and forms part of the retaining wall structure near the house. The final design was, in effect, a series of disguised terraces that helped the clients to ascend the steep slope gently and gradually.



^ An existing Purbeck stone wall in the upper garden gave me the inspiration to use serpentine drystone walls

